

Top 5 Peak Report

Group: Gale, P

Submitter: Francesca Piana

Project: RP-LC MW 150-1500

Sample ID: Gelator 19

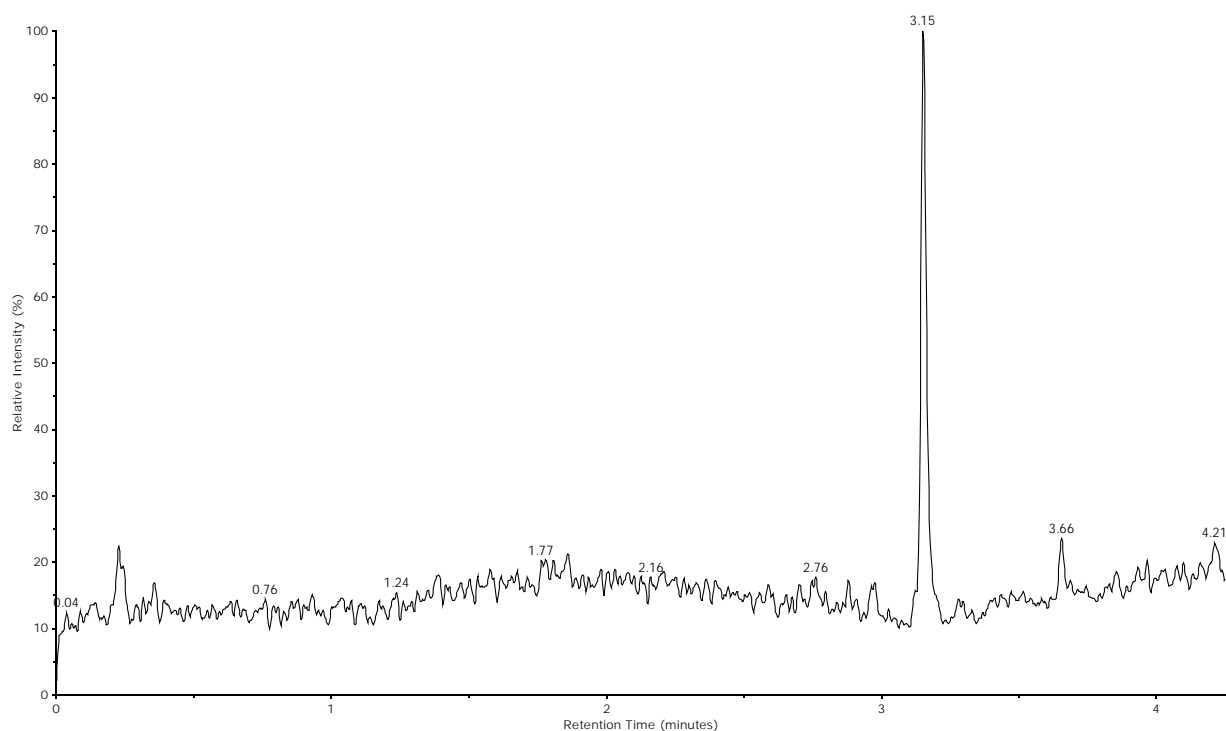
Experiment: B ESIPOS (simple mix) C18 Acid

Filename: Gale_P_Gelator_19_FP_290.pdf

Instrument: Blue RP UHPLC-MS (B30:1023)

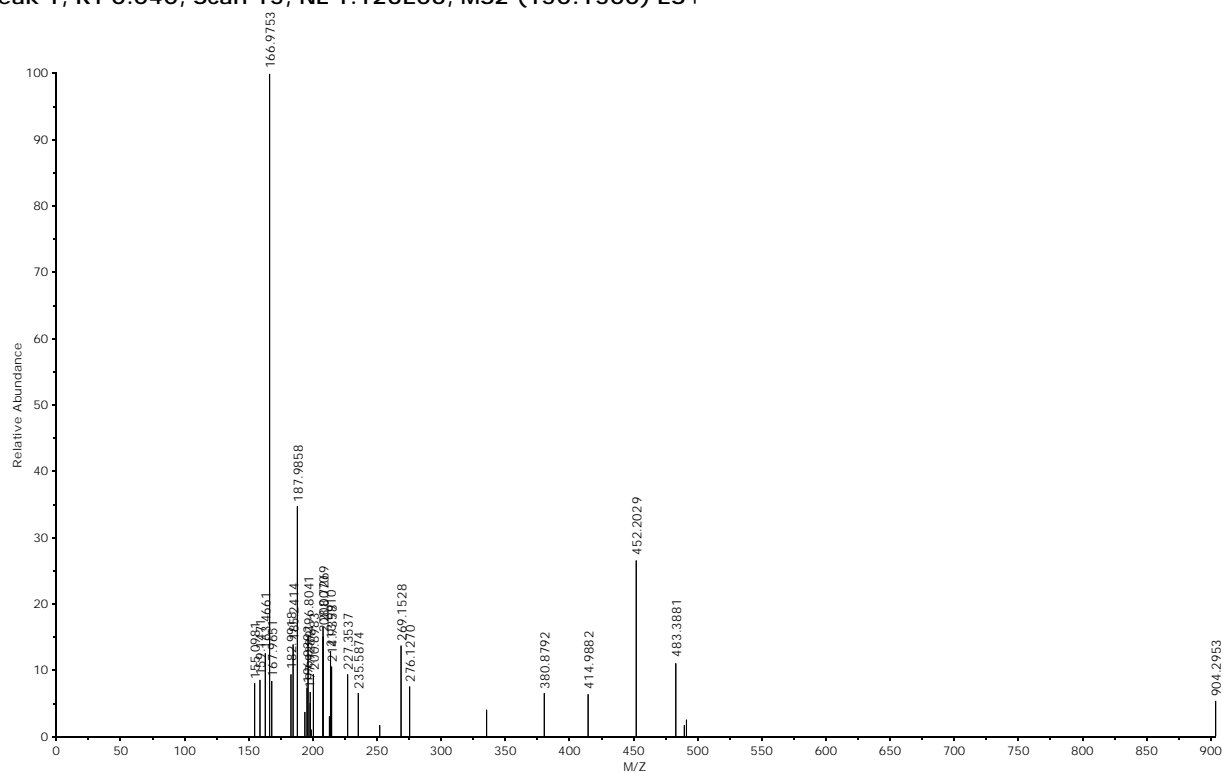
Acquisition Date: 25/09/2014 13:26:30

TIC, NL 2.882E07, MS2 (150:1500) ES+

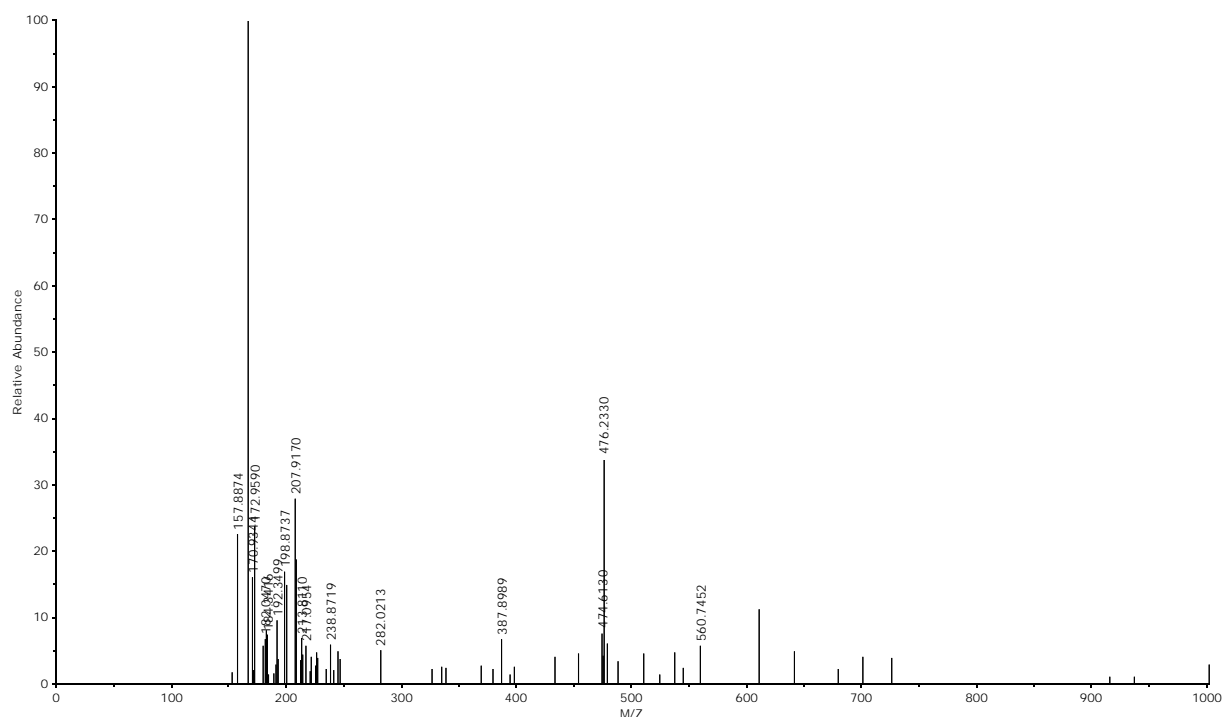


	RT Mins	Height	Height %	Area	Area %
1	0.04	2978287	11.89	6089345	15.04
2	0.23	2557016	10.21	2733375	6.75
3	1.77	1534826	6.13	1357418	3.35
4	3.15	25055070	100.00	40494559	100.00
5	3.66	2407308	9.61	3570125	8.82

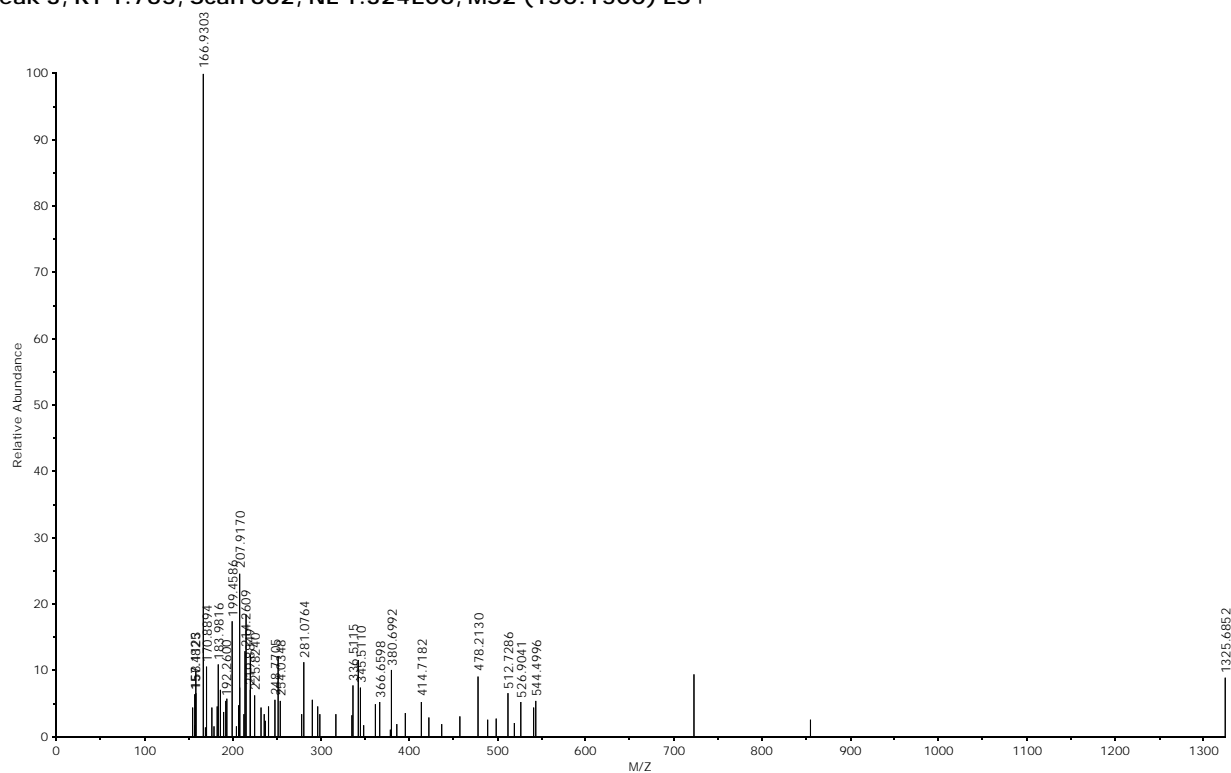
Peak 1, RT 0.040, Scan 15, NL 1.126E06, MS2 (150:1500) ES+



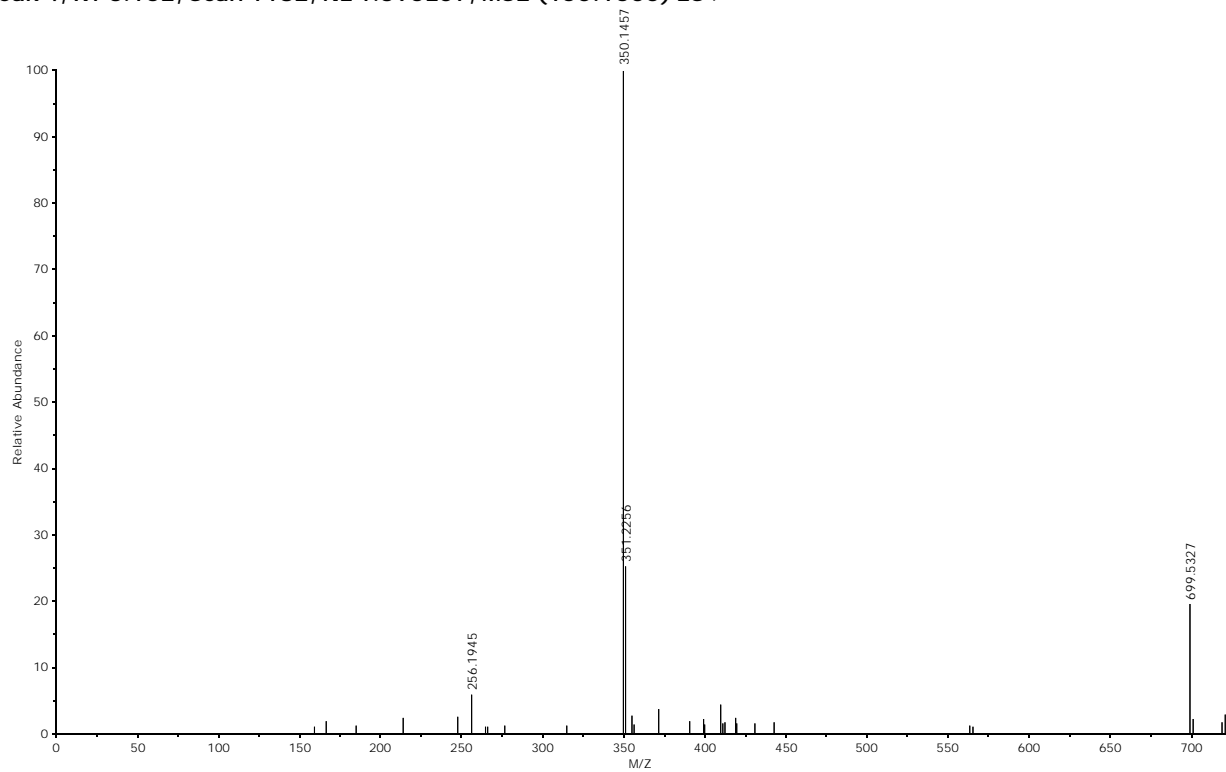
Peak 2, RT 0.229, Scan 86, NL 1.643E06, MS2 (150:1500) ES+



Peak 3, RT 1.765, Scan 662, NL 1.324E06, MS2 (150:1500) ES+



Peak 4, RT 3.152, Scan 1182, NL 1.395E07, MS2 (150:1500) ES+



Peak 5, RT 3.656, Scan 1371, NL 1.442E06, MS2 (150:1500) ES+

